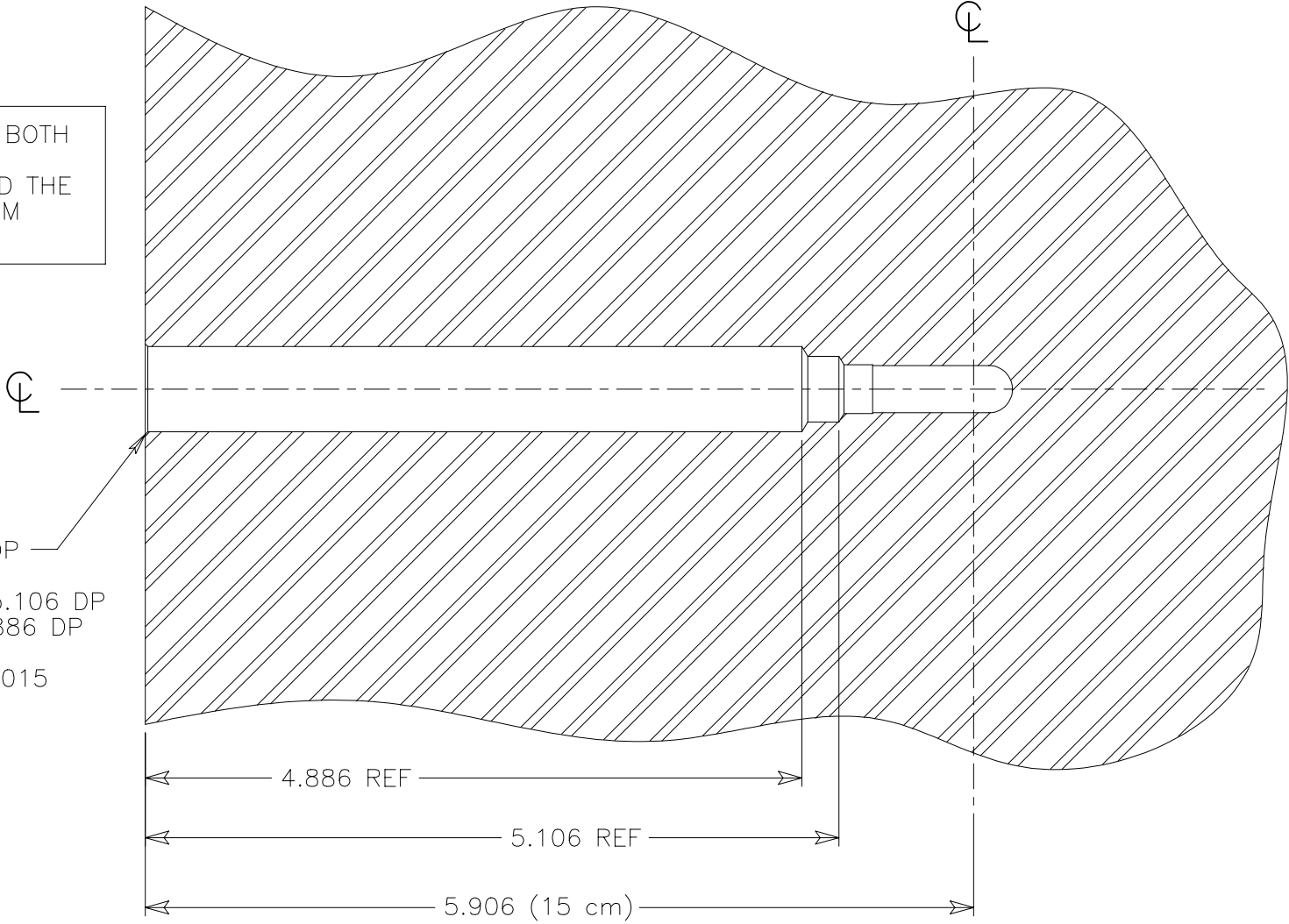


CENTERLINES REFER TO BOTH THE CENTROID OF THE COLLECTING VOLUME AND THE CENTER OF THE PHANTOM BLOCK

- 0.285 BALL MILL x 6.136 DP
- 0.290 REAMER x 5.306 DP
- 0.394 DRILL (118° TIP) x 5.106 DP
- 1/2 DRILL (118° TIP) x 4.886 DP
- 0.507 REAMER x 4.886 DP
- CHAMFER CORNER 45° x 0.015



ALL DIMENSIONS IN INCHES AND TOLERANCES OF ±0.005 UNLESS OTHERWISE NOTED

MATERIAL:
1. ACRYLIC, POLYSTYRENE, OR OTHER; 30 cm x 30 cm

REVISION NO.	00
DRAWN BY:	BDH

STANDARD IMAGING
Middleton, WI

PRODUCT NOTE

DATE	1/14/02
PAGE	1 OF 1
NUMBER	4480-00

SeedOS Ltd
cwalters@seedos.com
www.seedos.com

SUBJECT : MODEL A12S PHANTOM BLOCK MACHINING