

Needle Loading Shield

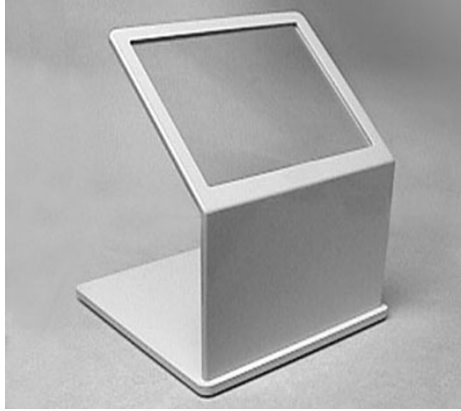


Table of Contents

Subject	Page
General Precautions	2
Customer Responsibility	2
Features & Specifications	3
Description	3
Operation	3
Maintenance	4
Service	4
Parts and Accessories	4
Warranty	5

General Precautions

Failure to observe these precautions may result in injury to personnel or damage to device.



CAUTION: Proper use of this device depends on careful reading of all instructions and labels.



CAUTION: Steam Sterilize (autoclave) or ETO sterilize only. Do not gamma ray sterilize.



CAUTION: Leaded glass is susceptible to scratches and attack by acids and alkalis (e.g. ammonia-based glass cleaner). Use only water, non-abrasive cleaning agents and soft cloth.



WARNING: After steam sterilization, unit will be hot. Allow adequate cooling time before handling.



WARNING: Do not drop or mishandle unit. For use with gamma and x-ray emitting LDR radiation sources only.

Customer Responsibility

This product and its components will perform properly and reliably only when operated and maintained in accordance with the instructions contained in this manual and accompanying labels. A defective device should not be used. Parts which may be broken or missing or are clearly worn, distorted or contaminated should be replaced immediately with genuine replacement parts manufactured by or made available from Standard Imaging Inc.



CAUTION: Federal law in the U.S.A. and Canada restricts the sale, distribution or use of this device to, by or on the order of a licensed medical practitioner. The use of this device should be restricted to the supervision of a qualified medical physicist. Handling of radioactive sources is potentially hazardous and should be performed by qualified personnel.

Should repair or replacement of this device become necessary after the warranty period, the customer should seek advice from Standard Imaging Inc. prior to such repair or replacement. If this device is in need of repair, it should not be used until all repairs have been made and the product is functioning properly and ready for use. The owner of this device has sole responsibility for any malfunction resulting from abuse, improper use or maintenance, or repair by anyone other than Standard Imaging Inc.

The information in this manual is subject to change without notice. No part of this manual may be copied or reproduced in any form or by any means without prior written consent of Standard Imaging Inc.

Features and Specifications

Dimensions: Width: Length: Height: Weight:	30.5 cm (12 inches) 30.5 cm (12 inches) 40.6 cm (16 inches) 6.8 kg (15 lbs)
Material:	Aluminum, Leaded Glass

Specifications subject to change without notice.

Description

The Standard Imaging Needle Loading Shield, REF 90070, is designed to provide superior operator shielding during manipulation of gamma and x-ray emitting LDR brachytherapy seeds like those typically used for prostate implant applications.

Operation

Before initial use, assemble the square base of the Needle Loading Shield to the angled plate containing the leaded glass. Using the four 1/4-20 x 5/8 screws and hex key wrench provided, secure the base to the angled plate by inserting the screws into the four holes in the base (from the side with the mounted feet), and fasten securely.

Maintenance

As is standard practice, it is recommended that the Needle Loading Shield be examined after each use for deterioration. Exterior cleaning of the non-glass surfaces, if needed, can be done with a cloth slightly dampened with a solution of mild detergent and water. To clean the leaded glass, use a soft cloth with warm water, and if needed, a mild detergent.

Service

There are no serviceable parts on the device.

Parts and Accessories List

REF	Description
90070	Needle Loading Shield
80176	Instruction Manual
11087	Leaded Glass, 8"x10"x1/4", ~0.6mm Pb equivalent

Notice: We welcome your evaluation of this manual.
Your comments and suggestions help us improve our publications.

Warranty

This product is sold by Standard Imaging Inc. under the warranty herein set forth. The warranty is extended only to the buyer purchasing the product directly from Standard Imaging Inc. or as a new product from an authorized dealer or distributor of Standard Imaging Inc.

For a period of twelve (12) months from the date of original delivery to the purchaser or a distributor, this product is warranted against functional defects in materials and workmanship, glass components excluded, provided it is properly operated under conditions of normal use, and that repairs and replacements are made in accordance herewith. The foregoing warranty shall not apply if the product has been disassembled, altered or repaired other than by Standard Imaging Inc. or if the product has been subject to abuse, misuse, negligence or accident.

Standard Imaging's sole and exclusive obligation and the purchaser's sole and exclusive remedy under the above warranties are limited to repairing or replacing free of charge, at Standard Imaging's option, a product: (1) which contains a defect covered by the above warranties; (2) which are reported to Standard Imaging not later than seven (7) days after the expiration date of the 12-month warranty period; (3) which are returned to Standard Imaging promptly after discovery of the defect; and (4) which are found to be defective upon Standard Imaging's examination. Transportation charges are the buyer's responsibility. STANDARD IMAGING INC. SHALL NOT BE OTHERWISE LIABLE FOR ANY DAMAGES, INCLUDING BUT NOT LIMITED TO, INCIDENTAL DAMAGES, CONSEQUENTIAL DAMAGES, OR SPECIAL DAMAGES.

THIS WARRANTY IS IN LIEU OF ALL OTHER WARRANTIES, EXPRESSED OR IMPLIED, WHETHER STATUTORY OR OTHERWISE, INCLUDING ANY IMPLIED WARRANTY OF FITNESS FOR A PARTICULAR PURPOSE. IN NO EVENT SHALL STANDARD IMAGING INC. BE LIABLE FOR ANY INCIDENTAL OR CONSEQUENTIAL DAMAGES RESULTING FROM THE USE, MISUSE OR ABUSE OF THE PRODUCT OR CAUSED BY ANY DEFECT, FAILURE OR MALFUNCTION OF THE PRODUCT, WHETHER A CLAIM OF SUCH DAMAGE IS BASED UPON THE WARRANTY, CONTRACT, NEGLIGENCE, OR OTHERWISE.

Distributed by SeeDOS Ltd
For further information or a quotation
please contact Colin Walters at
cwalters@seedos.com